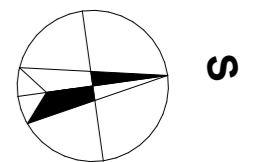
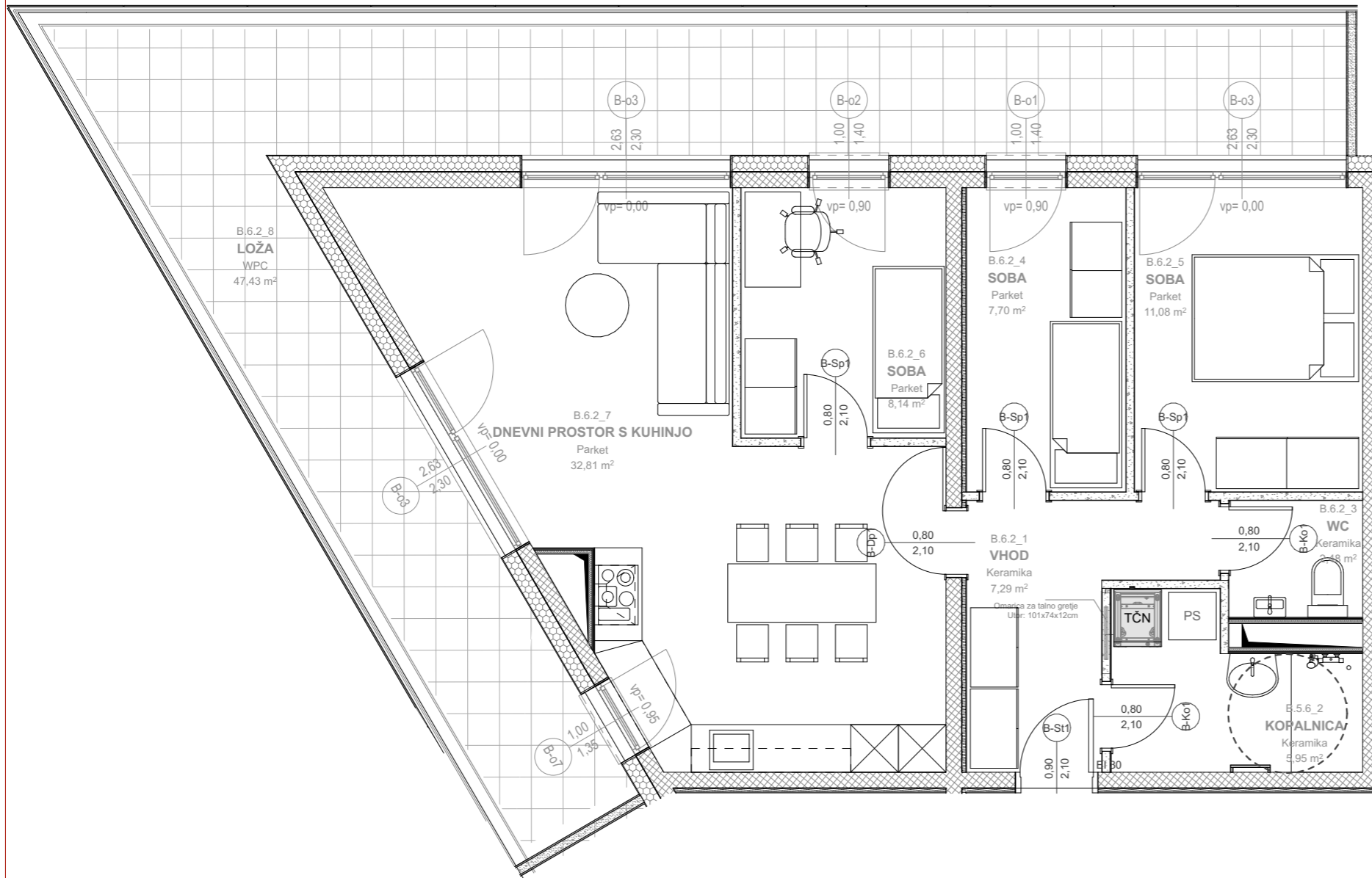


# SOSKA RADENCI DOLNOV



## Stanovanje B.6.2

Št. pr.	Prostor	Tlak	Površina m <sup>2</sup>
<b>6 nadstropje</b>			
B.6.2_1	VHOD	Keramika	7,29
B.6.2_3	WC	Keramika	2,48
B.6.2_4	SOBA	Parket	7,70
B.6.2_5	SOBA	Parket	11,08
B.6.2_6	SOBA	Parket	8,14
B.6.2_7	DNEVNI PROSTOR S KUHINJO	Parket	32,81
			<b>69,50 m<sup>2</sup></b>
<b>6 nadstropje</b>			
B.6.2_8	LOŽA	WPC	47,43
<b>Pritličje</b>			
B.6.2_S	SHRAMBA	Keramika	3,23



0 2 5 10 15 M 1:500



0 1 2

M 1:70

Arhitekturno in gradbeno načrtovanje: Vebiro d.o.o.

List številka: A-165/286